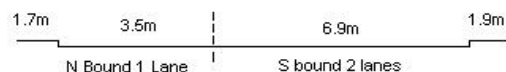
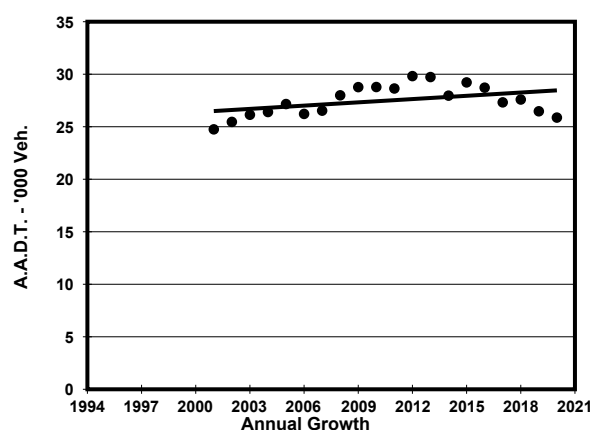
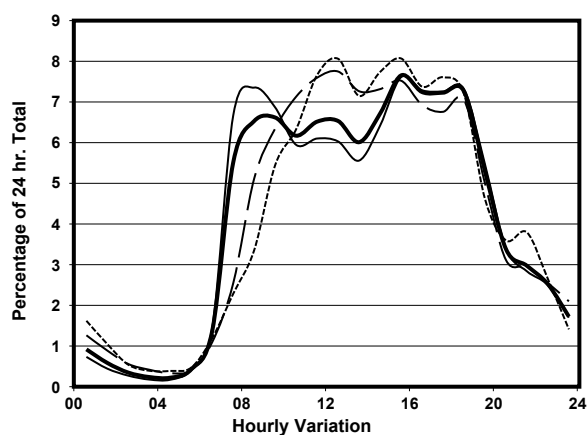
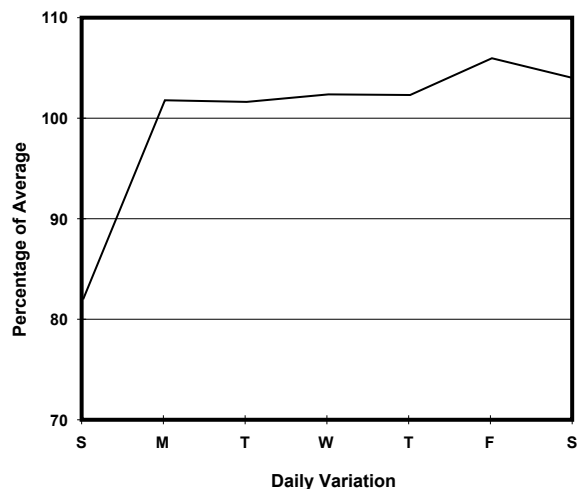
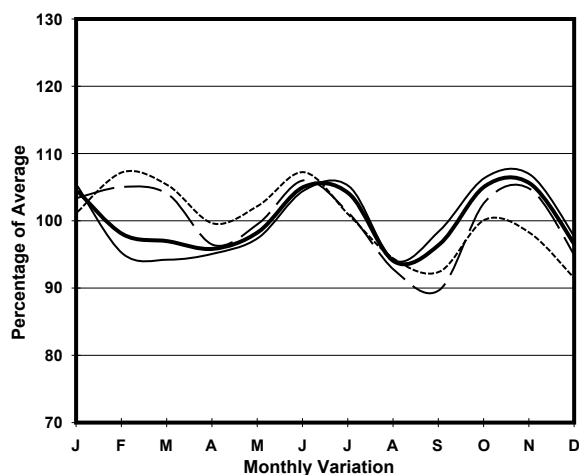


YEAR 2020  
 COVERAGE (B) STATION 2202  
 ROAD NETWORK MAJOR  
 ROAD TYPE DISTRICT DISTRIBUTOR

LINK WONG NAI CHUNG GAP RD (from STUBBS RD FO  
 <H119> SOUTHERN END to REPULSE BAY RD)



### 1. TRAFFIC FLOW VARIATION AND GROWTH



— All day      — Mon.- Fri.      ..... Sat.      - - - - - Sun.

### 2. TRAFFIC CHARACTERISTICS (BY DIRECTION)

| Parameter                            | All - Day | Mon. - Fri. | Sat.      | Sun.      |
|--------------------------------------|-----------|-------------|-----------|-----------|
| <b>SOUTH BOUND</b>                   |           |             |           |           |
| A.A.D.T.                             | 12000     | 12340       | 12780     | 10310     |
| R 12 / 24 - %                        | 80        | 80.1        | 80.1      | 79        |
| R 16 / 24 - %                        | 94.4      | 94.7        | 93.6      | 93.6      |
| AM Peak Hour                         | 0900-1000 | 0700-0800   | 0900-1000 | 0900-1000 |
| One-way flow at AM peak hour         | 750       | 880         | 870       | 600       |
| T - % (AM)                           | -         | 6.8         | -         | -         |
| PM Peak Hour                         | 1600-1700 | 1800-1900   | 1600-1700 | 1600-1700 |
| One-way flow at PM peak hour         | 850       | 900         | 890       | 770       |
| T - % (PM)                           | -         | 1.5         | -         | -         |
| Prop.of commercial vehicles - 16 hr. | -         | 2.9         | -         | -         |
| <b>NORTH BOUND</b>                   |           |             |           |           |
| A.A.D.T.                             | 13870     | 14500       | 14440     | 11100     |
| R 12 / 24 - %                        | 80        | 80.7        | 78.7      | 77.6      |
| R 16 / 24 - %                        | 94        | 94.6        | 92.4      | 92.3      |
| AM Peak Hour                         | 0800-0900 | 0800-0900   | 0900-1000 | 0900-1000 |
| One-way flow at AM peak hour         | 960       | 1160        | 860       | 560       |
| T - % (AM)                           | -         | 3.8         | -         | -         |
| PM Peak Hour                         | 1700-1800 | 1700-1800   | 1800-1900 | 1700-1800 |
| One-way flow at PM peak hour         | 1050      | 1090        | 1100      | 960       |
| T - % (PM)                           | -         | 2.9         | -         | -         |
| Prop.of commercial vehicles - 16 hr. | -         | 2.8         | -         | -         |

### 3. OTHER INFORMATION AND COMMENT

**Coverage (B) Station 2202**  
**Year 2020**

**4. Vehicle classification and occupancy - Monday to Friday**

| Time                   |     | Class of vehicle |                |      |               |      |            |       |                |         |      |
|------------------------|-----|------------------|----------------|------|---------------|------|------------|-------|----------------|---------|------|
|                        |     | Motor<br>Cycle   | Private<br>Car | Taxi | Private<br>LB | PLB  | Goods veh. |       | Non<br>Fr. Bus | Fr. Bus |      |
|                        |     |                  |                |      |               |      | Light      | M & H |                | SD      | DD   |
| 0700-0800              | Pro | 7.3              | 49.5           | 31.3 | 0.0           | 1.5  | 2.2        | 0.7   | 2.2            | 0.5     | 4.9  |
|                        | Ocp | 1.2              | 1.3            | 1.5  | 0.0           | 11.5 | 1.3        | 1.0   | 1.3            | 15.0    | 17.7 |
| 0800-0900              | Pro | 5.9              | 56.1           | 22.2 | 1.0           | 0.3  | 10.4       | 1.0   | 1.0            | 0.2     | 1.9  |
|                        | Ocp | 1.1              | 1.2            | 1.6  | 1.7           | 17.0 | 1.5        | 1.3   | 11.7           | 13.3    | 25.2 |
| 0900-1000              | Pro | 4.0              | 68.9           | 15.4 | 0.0           | 0.2  | 7.7        | 1.7   | 0.7            | 0.2     | 1.2  |
|                        | Ocp | 1.0              | 1.3            | 1.6  | 0.0           | 4.0  | 1.7        | 1.3   | 9.3            | 9.3     | 17.2 |
| 1000-1100              | Pro | 1.9              | 59.8           | 22.3 | 0.2           | 0.0  | 13.1       | 0.9   | 0.5            | 0.1     | 1.2  |
|                        | Ocp | 1.0              | 1.3            | 1.7  | 3.0           | 0.0  | 1.5        | 1.8   | 7.5            | 8.5     | 17.2 |
| 1100-1200              | Pro | 4.8              | 66.8           | 11.7 | 0.0           | 0.8  | 12.4       | 1.5   | 0.8            | 0.2     | 1.0  |
|                        | Ocp | 1.1              | 1.4            | 1.5  | 0.0           | 7.0  | 1.3        | 1.5   | 5.0            | 6.3     | 14.5 |
| 1200-1300              | Pro | 2.0              | 68.0           | 17.6 | 0.0           | 0.0  | 10.0       | 0.3   | 0.8            | 0.2     | 1.1  |
|                        | Ocp | 1.1              | 1.4            | 1.6  | 0.0           | 0.0  | 1.6        | 2.0   | 7.0            | 11.0    | 16.7 |
| 1300-1400              | Pro | 4.6              | 57.9           | 20.7 | 0.3           | 0.0  | 14.4       | 0.0   | 0.6            | 0.1     | 1.4  |
|                        | Ocp | 1.1              | 1.3            | 1.6  | 4.0           | 0.0  | 1.4        | 0.0   | 17.5           | 6.5     | 15.0 |
| 1400-1500              | Pro | 4.5              | 61.3           | 22.4 | 0.0           | 0.3  | 8.8        | 0.3   | 0.9            | 0.2     | 1.3  |
|                        | Ocp | 1.1              | 1.4            | 1.5  | 0.0           | 7.0  | 1.6        | 1.0   | 7.3            | 6.3     | 17.0 |
| 1500-1600<br>Peak hour | Pro | 1.9              | 61.0           | 24.5 | 0.5           | 0.2  | 9.6        | 0.0   | 0.7            | 0.2     | 1.3  |
|                        | Ocp | 1.1              | 1.4            | 1.6  | 3.0           | 9.0  | 1.4        | 0.0   | 4.3            | 8.3     | 15.0 |
| 1600-1700              | Pro | 2.6              | 61.2           | 25.0 | 0.2           | 0.2  | 8.2        | 0.0   | 1.2            | 0.1     | 1.3  |
|                        | Ocp | 1.1              | 1.5            | 1.7  | 5.0           | 8.0  | 1.9        | 0.0   | 3.8            | 16.5    | 19.0 |
| 1700-1800              | Pro | 4.3              | 64.6           | 24.9 | 0.5           | 0.0  | 3.2        | 0.0   | 0.9            | 0.2     | 1.5  |
|                        | Ocp | 1.3              | 1.3            | 1.6  | 1.0           | 0.0  | 1.6        | 0.0   | 10.0           | 13.7    | 23.3 |
| 1800-1900              | Pro | 4.1              | 65.0           | 24.8 | 0.2           | 0.2  | 3.4        | 0.0   | 1.1            | 0.2     | 0.9  |
|                        | Ocp | 1.1              | 1.4            | 1.6  | 1.0           | 17.0 | 1.5        | 0.0   | 5.6            | 9.7     | 24.4 |
| 1900-2000              | Pro | 3.2              | 70.7           | 22.8 | 0.2           | 0.2  | 0.9        | 0.0   | 0.6            | 0.1     | 1.3  |
|                        | Ocp | 1.1              | 1.4            | 1.6  | 4.0           | 10.0 | 1.3        | 0.0   | 7.3            | 18.0    | 15.8 |
| 2000-2100              | Pro | 1.3              | 66.1           | 29.9 | 0.0           | 0.9  | 0.0        | 0.0   | 0.4            | 0.0     | 1.3  |
|                        | Ocp | 1.0              | 1.4            | 1.6  | 0.0           | 8.5  | 0.0        | 0.0   | 1.0            | 0.0     | 14.0 |
| 2100-2200              | Pro | 5.0              | 53.5           | 37.5 | 0.0           | 0.0  | 1.1        | 0.6   | 0.6            | 0.0     | 1.8  |
|                        | Ocp | 1.0              | 1.4            | 1.5  | 0.0           | 0.0  | 1.5        | 2.0   | 6.0            | 0.0     | 9.8  |
| 2200-2300              | Pro | 6.0              | 48.8           | 40.6 | 0.0           | 0.0  | 2.2        | 0.0   | 0.5            | 0.0     | 1.8  |
|                        | Ocp | 1.0              | 1.5            | 1.3  | 0.0           | 0.0  | 2.0        | 0.0   | 8.0            | 0.0     | 8.3  |
| 16 hours               | Pro | 3.7              | 62.7           | 23.0 | 0.2           | 0.3  | 7.3        | 0.4   | 0.8            | 0.2     | 1.4  |
|                        | Ocp | 1.1              | 1.4            | 1.6  | 2.5           | 9.5  | 1.5        | 1.5   | 6.9            | 10.6    | 17.4 |

**Legend: Pro.** Proportion of vehicles in % (Sum may not add up to 100% due to figure rounding)\*

**Ocp.** Average occupancy of vehicles including both driver and passengers\*

**M&H** Medium and Heavy

\* All traffic data are collected from combined bounds